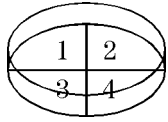


1. Each of four pieces of filter paper was saturated with a different antiseptic. An agar plate was contaminated with a source of bacteria and one piece of filter paper was placed in each section of the plate as shown. The number of bacterial colonies growing in each section was recorded daily in the chart shown. Which of the antiseptics tested would be the best to use when sterilizing a fever thermometer for use in the mouth?



Filter Paper	Type of Antiseptic	Number of Colonies		
		Day 1	Day 2	Day 3
1	Bleach*	2	6	11
2	Alcohol	1	4	7
3	Mouthwash	5	12	21
4	Disinfectant*	1	3	3

\*May be toxic to humans if taken internally

- A. Bleach                      B. Alcohol                      C. Mouthwash                      D. Disinfectant

2. Which of the following is true of the process of respiration?

- A. It is universal in animals and plants.  
B. It is universal in animals but limited to a few plants.  
C. It is universal in plants but limited to a few animals.  
D. It is limited to vertebrate animals and green plants.

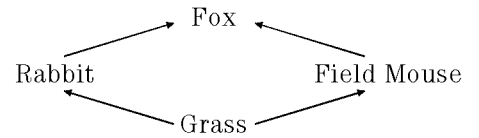
3. With respect to the field mouse in the food web, what is the fox considered?

A. A predator

B. A prey

C. A producer

D. A decomposer



4. Which of the following diseases is NOT directly transmitted among people in contact with each other?

A. Herpes

B. Influenza

C. Tuberculosis

D. Diabetes

5. Why should antibiotics be given to a person who is ill with a bacterial disease like strep throat, but not to a person who has a viral disease like flu?
- A. Antibiotics kill bacteria but not viruses.      B. Antibiotics make viruses grow faster.
- C. Antibiotics are made by viruses.                D. Viruses are not living things.

6. Cooked vegetables are often not as nutritious as the same kinds of vegetables uncooked. How could you test this statement?
- A. Compare the weight of the vegetables before and after they are cooked.
- B. Compare the color of the cooked and uncooked vegetables.
- C. Analyze the vegetables for their vitamin content before and after cooking.
- D. Test the acidity of the water in which the vegetables were cooked.

7. A farmer sprayed his barn with a chemical poison that killed most of the flies. Three months later he found that the number of flies in his barn was the same as before, so he sprayed with the same poison. This time, though, far fewer flies were killed. How can this difference be explained?
- A. He probably did not use enough poison the second time.
  - B. Some flies in the first group were resistant to the poison and reproduced more poison-resistant flies.
  - C. The surviving flies became accustomed to the poison and used it as food.
  - D. The surviving flies learned how to avoid the poison.

8. A certain organism has many cells, each containing a nucleus, if the organism makes its own food, it would be classified as
- A. a bacterium
  - B. a fungus
  - C. a plant
  - D. an animal

9. What does a mitochondrion do in a cell?

- A. It controls the transport of substances leaving and entering the cell.
- B. It contains the information to control the cell.
- C. It produces a form of energy that the cell can use.
- D. It breaks down waste products in the cell.

10. When a population of mice is infected with parasites, many of the mice die from the parasitic infection, but some mice appear as healthy as they were before being infected. Some people are considering using these parasites to control the mouse population in people's homes.

Give one advantage and one disadvantage of using these parasites instead of mouse traps or poisons to limit the population of mice.

Advantage:

Disadvantage:

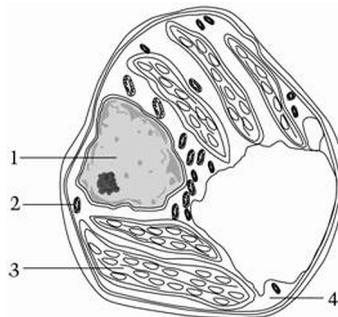
11. A significant percentage of the United States population is overweight. List two factors in our American lifestyle that put people in the United States at greater risk for becoming overweight than people who live in other countries.

12. A woman uses alcohol and other drugs in excess during pregnancy. Explain how the alcohol and other drugs could affect her baby.

13. Which of the following is an example of genetic engineering?

- A. Growing a whole plant from a single cell.
- B. Finding the sequences of bases in plant DNA.
- C. Inserting a gene into plants that makes them resistant to insects.
- D. Attaching the root of one type of plant to the stem of another type of plant.

14. In the picture of a cell below, which label indicates the part of the cell that contains most of the cell's genetic material?



- A. 1
- B. 2
- C. 3
- D. 4

15. Which characteristic is shared by all cells?

- A. They need energy.
- B. They reproduce sexually.
- C. They make their own food.
- D. They move from place to place.

16. Which statement is consistent with the data in the table?

AMOUNT OF OXYGEN PRODUCED IN A POND	
Location	Oxygen Produced
Top Meter	4 grams/cubic meter
Second Meter	3 grams/cubic meter
Third Meter	1 gram/cubic meter
Bottom Meter	0 grams/cubic meter

- A. More oxygen production occurs near the surface because there is more light there.
- B. More oxygen production occurs near the bottom because there are more plants there.
- C. The greater the water pressure, the more oxygen production occurs.
- D. The rate of oxygen production is not related to depth.



17. What is the main function of chloroplasts in a plant cell?

- A. To absorb light energy and manufacture food
- B. To remove waste materials by active transport
- C. To manufacture chemical energy from food
- D. To control the shape of the cell

18. Which is the most basic unit of living things?

- A. Cells
- B. Bones
- C. Tissues
- D. Organs

19. Jose caught influenza. Write down one way he could have caught it.

20. Immediately before and after running a 50 meter race, your pulse and breathing rates are taken. What changes would you expect to find?

- A. an increase in pulse but no change in breathing rate
- B. an increase in pulse and breathing rate
- C. a decrease in pulse and breathing rate
- D. no change in either

21. The *best* reason for including protein in a healthy diet is because it is the main source of

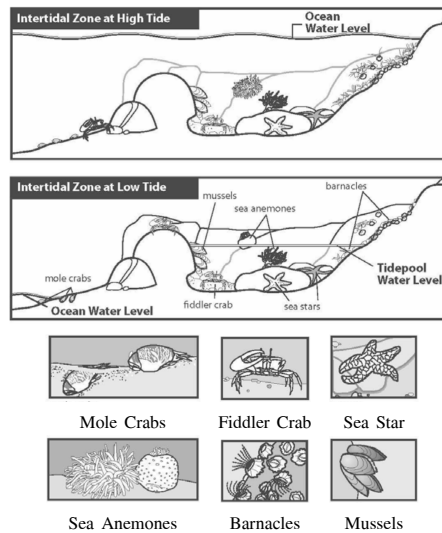
A. energy for the body

B. fiber for digestion

C. raw materials for cell growth and repair

D. vitamins for fiahtins disease

22. The intertidal zone is found along the ocean shore between the low-tide and high-tide lines. The diagrams below show a cross-section of an intertidal zone at high tide and at low tide and some of the organisms living there.



The organisms that live in the intertidal zone have special adaptations that allow them to survive the effects of tides.

Select an organism from the intertidal zone. Identify a physical feature or behavior of this organism. Explain how this feature or behavior helps the organism to survive low tide.

Name of organism: \_\_\_\_\_

Feature or behavior: \_\_\_\_\_

Explanation:

23. Which of the following is caused by a virus?

A. ulcer

B. malaria

C. tuberculosis

D. influenza

24. What is the main function of chlorophyll in plants?

A. To absorb light energy

B. To break down carbon dioxide

C. To make plants' leaves poisonous to insects

D. To protect plants from disease

25. Food and oxygen are produced during photosynthesis in green plants. Chlorophyll is one thing that is needed for photosynthesis.

Name two more factors that are needed for photosynthesis.

26. The table below lists some properties of three pure substances (X, Y and Z). One of these substances is iron, one is water, and one is oxygen.

<b>Substance</b>	<b>Melting/Freezing Point (° C)</b>	<b>Boiling Point (° C)</b>	<b>Good Conductor of Electricity</b>
X	-218	-183	no
Y	1535	2750	yes
Z	0	100	no

Identify what each substance is by writing *iron*, *water* or *oxygen* into the correct spaces below.

Substance X is: \_\_\_\_\_

Substance Y is: \_\_\_\_\_

Substance Z is: \_\_\_\_\_

EOG review viruses      05/05/2015

- |   |  |
|---|--|
| <p>1.<br/>Answer:      B</p> <p>2.<br/>Answer:      A</p> <p>3.<br/>Answer:      A</p> <p>4.<br/>Answer:      D</p> <p>5.<br/>Answer:      A</p> <p>6.<br/>Answer:      C</p> <p>7.<br/>Answer:      B</p> <p>8.<br/>Answer:      C</p> <p>9.<br/>Answer:      C</p> <p>10.<br/>Answer:      Demonstrates and understanding of an advantage and a disadvantage</p> <p>11.<br/>Answer:      Eating fatty foods Eat too much Eating junk food/candy Not enough exercise</p> <p>12.<br/>Answer:      Credited transport methods include:<br/>                        the alcohol and drugs could cross the placenta to the fetus. passing through mother's bloodstream Credited effects on baby include:<br/>                        addiction birth defects premature birth/miscarriage</p> <p>13.<br/>Answer:      C</p> <p>14.<br/>Answer:      A</p> <p>15.<br/>Answer:      A</p> <p>16.<br/>Answer:      A</p> <p>17.<br/>Answer:      A</p> | <p>18.<br/>Answer:      A</p> <p>19.<br/>Answer:      [answers may vary]</p> <p>20.<br/>Answer:      B</p> <p>21.<br/>Answer:      C</p> <p>22.<br/>Answer:      Examples: Sea anemones - They close up. It keeps them from drying out during low tide. Mole crabs - They dig into the sand. They are not exposed at low tide. Mussels - They have hard shells. They can store water inside their shells. Fiddler crabs - They have legs and can crawl into the tidepool and rocks to find food. Barnacles - They close up and have hard shells. The predators cannot eat them. Sea stars - Suction cups on their legs. Attach to the rocks and not get swept to sea.</p> <p>23.<br/>Answer:      D</p> <p>24.<br/>Answer:      A</p> <p>25.<br/>Answer:      Sunlight, carbon dioxide, water, air</p> <p>26.<br/>Answer:      X = oxygen, Y = iron, Z = water</p> |
|---|--|